

CITY OF CEDAR RAPIDS VETERANS MEMORIAL STADIUM ADA COMPLIANCE - PHASE 1 - BID PACKAGE #1

950 ROCKFORD ROAD SOUTHWEST,
CEDAR RAPIDS, IA 52404

PROJECT SCOPE

PROJECT SCOPE OF WORK SUMMARY

PHASE 1 SCOPE OF WORK SHALL BE COMPLETED BY DECEMBER 31 2016. THE FOLLOWING LIST SUMMARIZES THE WORK TO BE PERFORMED AT THE CEDAR RAPIDS VETERANS MEMORIAL STADIUM FOR PURPOSES OF COMPLYING WITH THE DOJ'S SURVEY OF CORRECTIVE MEASURES TO BE TAKEN AT THAT SITE. THE ITEMS ARE LISTED BY SPACE OR AREA AND ARE SHOWN ON THE PLANS. THE WORK IDENTIFIED UNDER THIS SUMMARY IS INTENDED TO ORIENT THE CONTRACTORS REGARDING THE SCOPE OF WORK AT THIS FACILITY AND IS NOT INTENDED TO FULLY REPRESENT THE TOTAL SCOPE OF ACTUAL WORK NECESSARY TO MAKE THE MODIFICATIONS AND COMPLETE THE WORK FOR COMPLIANCE. THE CONTRACTOR IS DIRECTED TO VISIT THE SITE AND BECOME FAMILIAR WITH THE EXISTING CONDITIONS AND PROVIDE THE WORK NECESSARY TO MAKE THE CHANGES LISTED. IF THERE ARE ANY QUESTIONS, THE CONTRACTOR SHALL IMMEDIATELY NOTIFY THE ARCHITECT AND OWNER REGARDING ANY CONFLICTS OR REASONS THE WORK CAN'T BE CARRIED OUT AS SHOWN.

PLAN KEY DESCRIPTION

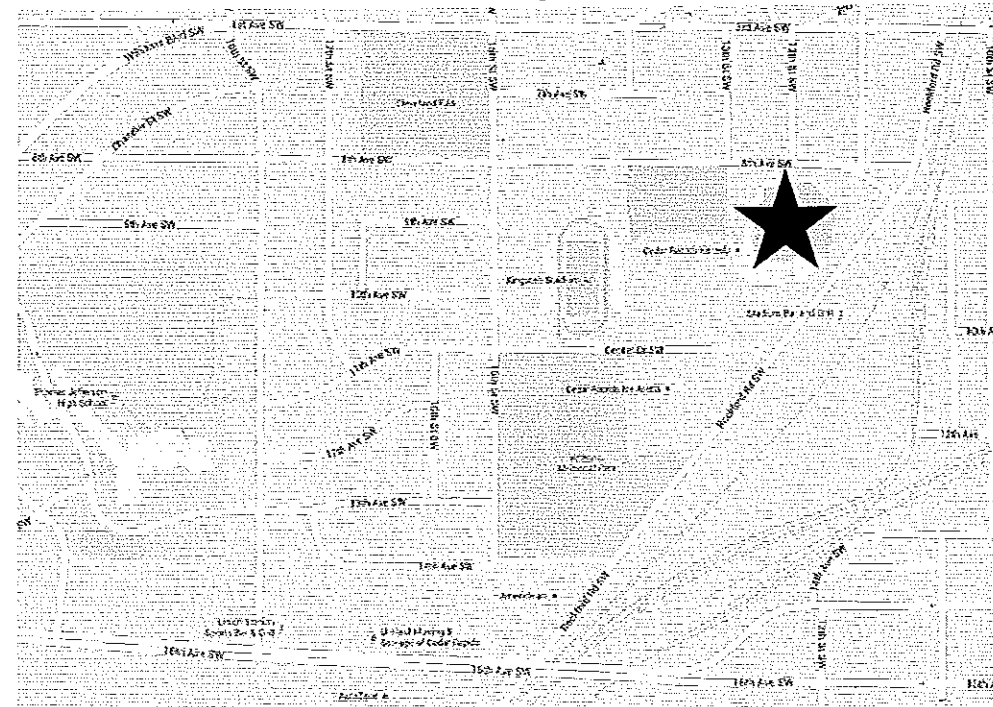
- A. REMOUNT SIDE GRAB BAR TO MAX 12" FROM REAR WALL AND MIN 54" ON FAR END, AND AT 33"-36" AFF.
- B. PROVIDE NEW PLASTERS AND REHANG STALL DOOR TO BE MAX 4" FROM ADJACENT STALL PARTITION AND ON STALL WALL FURTHEST FROM TOILET.
- C. ADJUST STALL DOOR TO BE SELF-CLOSING AND INSTALL EXTERIOR STALL HARDWARE OPERABLE WITHOUT TIGHT PINCH OR GRASP.
- D. PROVIDE CANE DETECTABLE BOX BELOW PAPER TOWEL DISPENSER.
- E. REMOUNT TOILET TO WITHIN 16"-18" FROM ADJACENT STALL WALL.
- A. REMOUNT HAND HELD SHOWER TO MAX 48" AFF.
- B. ADJUST SHOWER CONTROLS TO BE OPERABLE WITH LESS THAN 5 LBS OF FORCE.
- C. REMOVE TILE FROM WALL OPPOSITE SHOWER CONTROL WALL AND WALL ADJACENT TO SHOWER CONTROL WALL TO CREATE MIN 36"X36" SIZE SHOWER STALL. REPAINT STRIPPED WALLS WITH EPOXY PAINT AND SKIM COAT PLASTER.
- A. CORRECT SLOPE AT DRAIN TO NO MORE THAN 2.08% IN ANY DIRECTION. ADJUST DRAIN HEIGHT - FILL "FLOOR DISH" TO NEW HEIGHT.
- B. REDUCE CURB AT SHOWER TO NO MORE THAN 1/2".
- C. REMOUNT SHOWER BENCH SO THAT FRONT EDGE IS WITHIN 3" OF OPENING AND 14"-15" FROM SEAT WALL TO FRONT OF "L".
- D. ENLARGE SIZE OF SHOWER STALL TO MIN 36"X36" BY REMOVING WALL TILE FROM WALL OPPOSITE SHOWER CONTROL WALL. REPAINT STRIPPED WALLS WITH EPOXY PAINT AND SKIM COAT PLASTER.
- A. REMOUNT SHOWER BENCH SO THAT FRONT EDGE IS WITHIN 3" OF OPENING, 14"-15" FROM SEAT WALL TO FRONT OF "L", AND TOP OF SEAT IS 17"-19" AFF.
- B. REPLACE SHOWER BASIN WITH ONE THAT IS MIN 36"X36" LARGE.
- C. REMOUNT HAND HELD SHOWER UNIT TO MAX 48" AFF.
- A. CORRECT SLOPE AT DRAIN TO NO MORE THAN 2.08% IN ANY DIRECTION. ADJUST DRAIN HEIGHT - FILL "FLOOR DISH" TO NEW HEIGHT.
- B. ADJUST SHOWER CONTROL TO BE OPERABLE WITH LESS THAN 5 LBS OF FORCE.
- C. ENLARGE SHOWER STALL BY REMOVING FINISHES, SHEET ROCK, AND STUDS. REPLACE WALL WITH ONE SIZE SMALLER STUD WALLS. RE-APPLY SHEET ROCK, SKIM COAT, AND PAINT NEW WALL.
- D. REMOUNT LAVATORY SO TOP OF RVH IS MAX 34" AFF.
- A. REMOUNT SHOWER SEAT TO BE 17"-19" AFF.
- B. CORRECT SLOPE AT DRAIN TO NO MORE THAN 2.08% IN ANY DIRECTION. ADJUST DRAIN HEIGHT - FILL "FLOOR DISH" TO NEW HEIGHT.
- C. ENLARGE SHOWER STALL BY REMOVING FINISHES, SHEET ROCK, AND STUDS. REPLACE WALL WITH ONE SIZE SMALLER STUD WALLS. RE-APPLY SHEET ROCK, SKIM COAT, AND PAINT NEW WALL.
- A. REMOUNT SHOWER BENCH SO THAT FRONT EDGE IS WITHIN 3" OF OPENING, 14"-15" FROM SEAT WALL TO FRONT OF "L", AND TOP OF SEAT IS 17"-19" AFF.
- B. REMOUNT HAND HELD SHOWER UNIT TO MAX 48" AFF.
- C. ADJUST SHOWER CONTROL TO BE OPERABLE WITH LESS THAN 5 LBS OF FORCE.
- D. CORRECT SLOPE AT DRAIN TO NO MORE THAN 2.08% IN ANY DIRECTION. ADJUST DRAIN HEIGHT - FILL "FLOOR DISH" TO NEW HEIGHT.
- A. PROVIDE NEW PLASTERS AND REHANG ACCESSIBLE STALL DOOR TO BE MAX 4" FROM ADJACENT STALL PARTITION AND ON THE STALL WALL FURTHEST FROM TOILET.
- B. TRANSFORM STALL TO AMBULATORY STALL WITH A WIDTH OF 38"-39".
- C. AMBULATORY STALL: PROVIDE (2) GRAB BARS AND MOUNT ON BOTH SIDES OF STALL AT MAX 12" FROM REAR WALL AND MIN 54" ON FAR END, AND AT 33"-36" AFF.
- D. AMBULATORY STALL: REMOUNT CENTER OF TOILET PAPER DISPENSER 7'-9" FROM FRONT OF TOILET, 15'-48" AFF, AND MIN 12" ABOVE OR 1.5" BELOW GRAB BAR.
- E. AMBULATORY STALL: REMOUNT SANITARY DISPENSER AT 15'-48" AFF AND MIN 12" ABOVE OR 1.5" BELOW GRAB BAR.

- A. REMOUNT GRAB BARS ON BOTH SIDES OF AMBULATORY STALL AT MAX 12" FROM REAR WALL AND MIN 54" ON FAR END, AND AT 33"-36" AFF.
- B. ADJUST STALL DOOR TO BE SELF-CLOSING AND REPLACED STALL HARDWARE WITH HARDWARE OPERABLE WITHOUT TIGHT GRASP OR PINCH IN BOTH THE AMBULATORY AND ACCESSIBLE STALLS.
- C. AMBULATORY STALL: REMOUNT TOILET PAPER DISPENSER AT MIN 12" ABOVE OR 1.5" BELOW GRAB BAR AS WELL AS 48" MAX AFF.
- A. REMOUNT GRAB BARS ON BOTH SIDES OF AMBULATORY STALL AT MAX 12" FROM REAR WALL AND MIN 54" ON FAR END, AND AT 33"-36" AFF.
- B. ADJUST STALL DOOR TO BE SELF-CLOSING AND REPLACED STALL HARDWARE WITH HARDWARE OPERABLE WITHOUT TIGHT GRASP OR PINCH IN THE AMBULATORY STALLS.
- C. LOWER HOOK IN AMBULATORY STALL TO MAX 48" AFF.
- A. ADJUST DRINKING FOUNTAIN CONTROLS SO A MAX OF 5 LBS OF FORCE IS REQUIRED TO OPERATE DRINKING FOUNTAIN.
- A. ADJUST HOBW/DRINKING FOUNTAIN CONTROLS SO A MAX OF 5 LBS OF FORCE IS REQUIRED TO OPERATE DRINKING FOUNTAIN.

★ = PROJECT LOCATION



NOT TO SCALE



ARCHITECT/CIVIL ENGINEER
AMENT DESIGN
625 32nd AVENUE SW
CEDAR RAPIDS, IA 52404
PHONE (319) 378-1401
FAX (319) 378-1975

INDEX OF SHEETS

NO.	DESCRIPTION
COVER	COVER
G0.0	GENERAL INFORMATION
G1.1	SERVICE LEVEL REFERENCE PLAN
G1.2	CONCOURSE REFERENCE PLAN
G1.3	PHOTO REFERENCE SHEET
G1.4	DETAILS
G1.5	PLAN SPEC NOTES
G1.6	DOJ SURVEY - FOR REFERENCE SURVEY



I HEREBY CERTIFY THAT THE PLANS, SPECIFICATIONS OR REPORT WAS PREPARED BY ME OR UNDER MY DIRECT PERSONAL SUPERVISION AND THAT I AM A DULY REGISTERED ARCHITECT UNDER THE LAWS OF THE STATE OF IOWA.

SIGNED: _____ DATE: _____

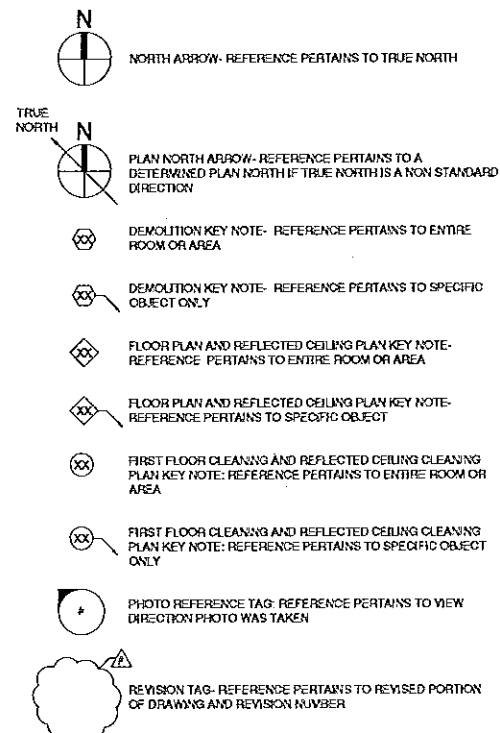
ALLEN M. VARNET, JR. IOWA LICENSE NO. 2233

MY LICENSE RENEVAL DATE IS JUNE 30, 2017.

ENTIRE SUBMISSION IS CONTROLLED BY THIS SEAL UNLESS SPECIFIED BELOW.

G-00015

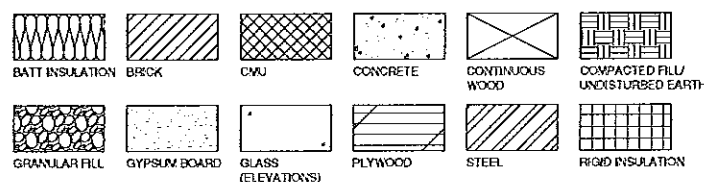
STANDARD SYMBOL DEFINITIONS



STANDARD ABBREVIATIONS

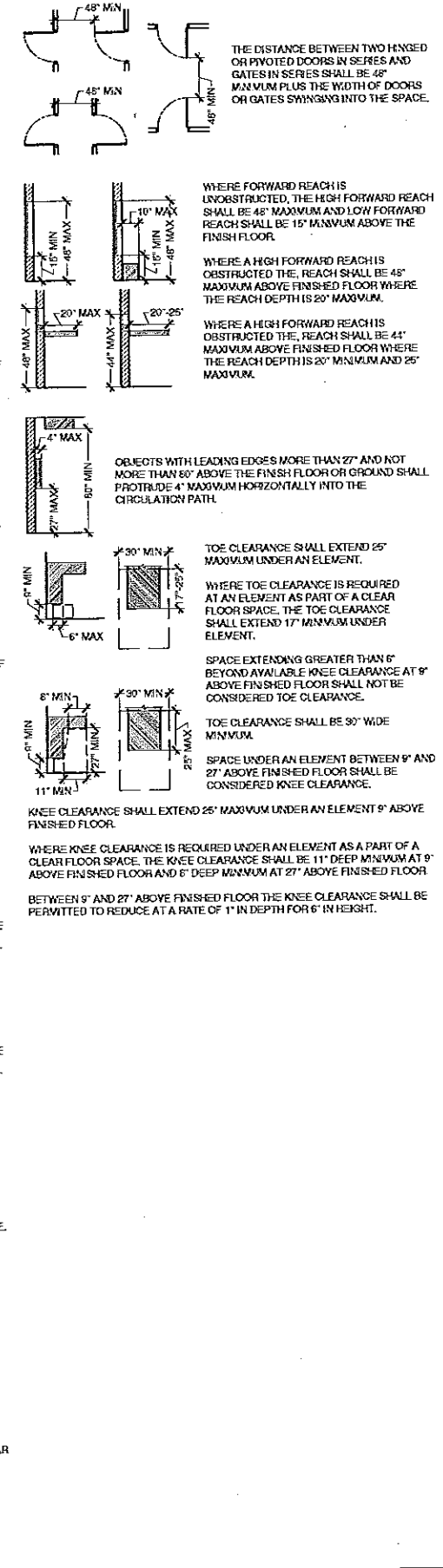
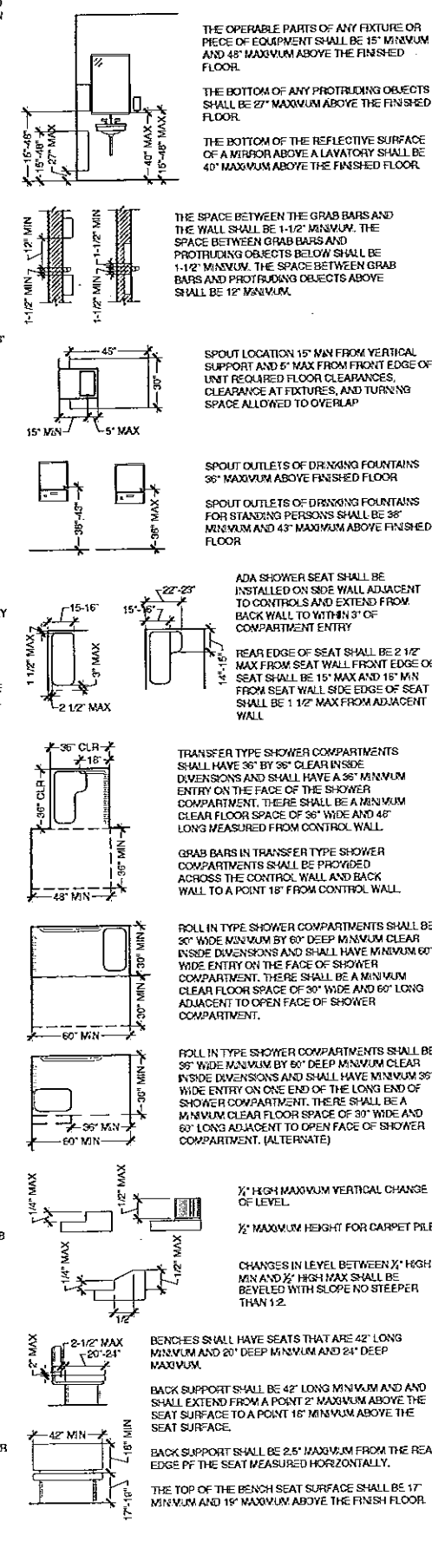
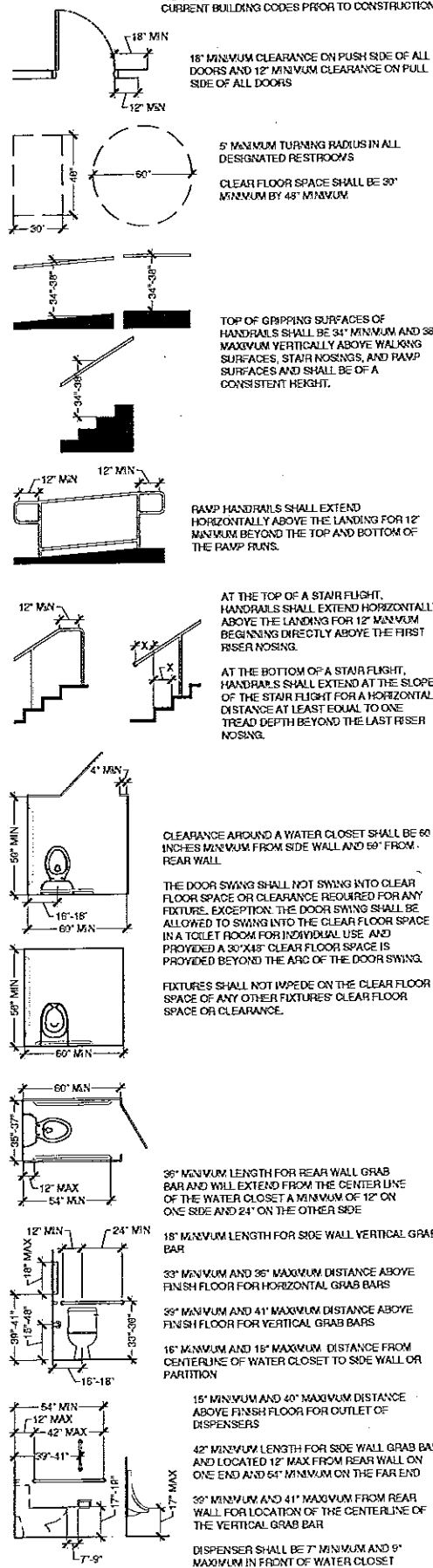
#	NUMBER	GA	GALV	PT	PAINT
ACP	ACoustical CEILING PANELS	GC	GENeral CONTRACTOR	PVC	POLYVINYL CHLORIDE
AF	AFTER FINISHED FLOOR	GM	GYPsum BOARD	QT	QUARRY TILE
ALUM	ALUMINUM	HM	HOLLOW METAL	RAD	RADIUS
ANOD	ANODIZED	HORZ	HORIZONTAL	RBR	RUBBER BASE
ARGB	ABUSE-RESISTANT GYPSUM BOARD	HPC	HIGH PERFORMANCE COATING	RD	ROOF DRAIN
B	BOTTOM OF	HPOF	HIGH PERFORMANCE ORGANIC FINISH	RES	RESINOUS FLOORING
BBT	BROASSED TILE	HT	HEIGHT	REV	REVISION
BCMU	BURKSHED CONCRETE MASONRY UNIT	HYAC	HEATING VENTILATION AIR CONDITIONING	RFL	RUBBER FLOORING
BE	BANKED CHANSEL	ICP	INSULATED ALUMINUM COMPOSITE PANEL	RJ	REVEAL JOINT
BFF	BELOW FINISHED FLOOR	ID	INSIDE DIAMETER	RO	ROUGH OPENING
BM	BENCH MARK	IG	INSULATED GLASS	ROW	RIGHT-OF-WAY
BMU	BRICK	IGHM	INSULATED GALVANIZED HOLLOW METAL	SC	SEALED CONCRETE
BRG	BEARING	IHM	INSULATED HOLLOW METAL	SE	SQUARE FOOT
C	CHANNEL	ISG	INSULATED SPANDREL GLASS	SH	SINGLE HUNG
CFCI	CONTRACTOR FURNISHED CONTRACTOR INSTALLED	LB/LBS	POUND/POUNDS	SHL	SHOWER
CFE	CITY FINISHED CEILING ELEMENT	MAH	MAXIMUM ATTAINABLE HEIGHT	SN	STAIR NOSING
CFCI	CONTRACTOR FURNISHED OWNER INSTALLED	MAX	MAXIMUM	SRFEC	SEMI-RECESSED FIRE EXTINGUISHER CABINET
CJ	CONTROL JOINT	M/C	MECHANICAL CONTRACTOR	SS	SOLID SURFACE
CL	CENTER LINE	M/R	MANUFACTURERS	ST.STL	STAINLESS STEEL
CLG	CEILING	MH	MANHOLE	STN	STAIN
CLL	CONSTRUCTION LIMITS LINE	ML	MIL THICKNESS	SUSP	SUSPENDED
CMU	CONCRETE MASONRY UNIT	MO	MASONRY OPENING	TAG	TONGUE AND GROOVE
CONC	CONCRETE	MOUNT	MOUNTED	TB	TACK BOARD
CONT	CONTINUOUS	NC	NOT IN CONTRACT	TERB	TERRAZZO
CPT	CARPET	NTS	NOT TO SCALE	TF	TACKABLE FABRIC
CT	CERAMIC TILE	OA	OVERALL	TG	TEMPERED GLASS
CTCB	CERAMIC TILE COVE BASE	OC	ON CENTER	TH	TEMPERED INSULATED GLASS
CW	CURTAIN WALL	OF	OWNER FURNISHED CONTRACTOR INSTALLED	TI	TOP OF
DB	DRY-ERASE BOARD	OFI	OWNER FURNISHED OWNER INSTALLED	TYP	TYPICAL
DEMO	DEMOLITION DEMOLITION	OD	OUTSIDE DIAMETER	UL	UNDERWRITERS LABORATORIES, INC.
D.E.F.S.	DIRECT APPLIED EXTERIOR FINISH SYSTEM	OH	OVERHEAD	UNO	UNLESS NOTED OTHERWISE
DA	DOWNSPOUT	OPP	OPPOSITE	VB	VINYL BASE
DS	ELECTRICAL CONTRACTOR	ORD	OVERFLOW ROOF DRAIN	VCT	VINYL COMPOSITION TILE
ELF.S.	EXTERIOR INSULATION & FINISH SYSTEM	OSB	ORIENTED STRAND BOARD	VERT	VERTICAL
EJ	EXPANSION JOINT	OTS	OPEN TO STRUCTURE	VIF	VERBIF IN FIELD
ELEC	ELECTRICAL	(P)	PATENTED	VWC	VINYL WALL COVERING
ELEV	ELEVATION	PORT	PORCELAIN TILE	W	WITH
EPT	EPOXY PAINT	PJ	PANEL JOINT	WO	WOOD
EO	EQUAL	PL	PLATE	WFE	WALL-MOUNTED FIRE EXTINGUISHER
EW	ELECTRIC WATER COOLER	PLM	PLASTIC LAMINATE	WG	WIRE GLASS
EX	EXISTING	PLY	PLYWOOD	WM	WALK-OFF MAT
FD	FLOOR DRAIN			WT	WINDOW TREATMENT
FE	FIRE EXTINGUISHER			WWF	WELODED WIRE FABRIC
FEC	FIRE EXTINGUISHER CABINET				
FF	FINISHED FLOOR				
FIN	FINISH				
FRO	FOR REFERENCE ONLY				
FRP	FIBERGLASS REINFORCED PANELS				
G	GROUT				

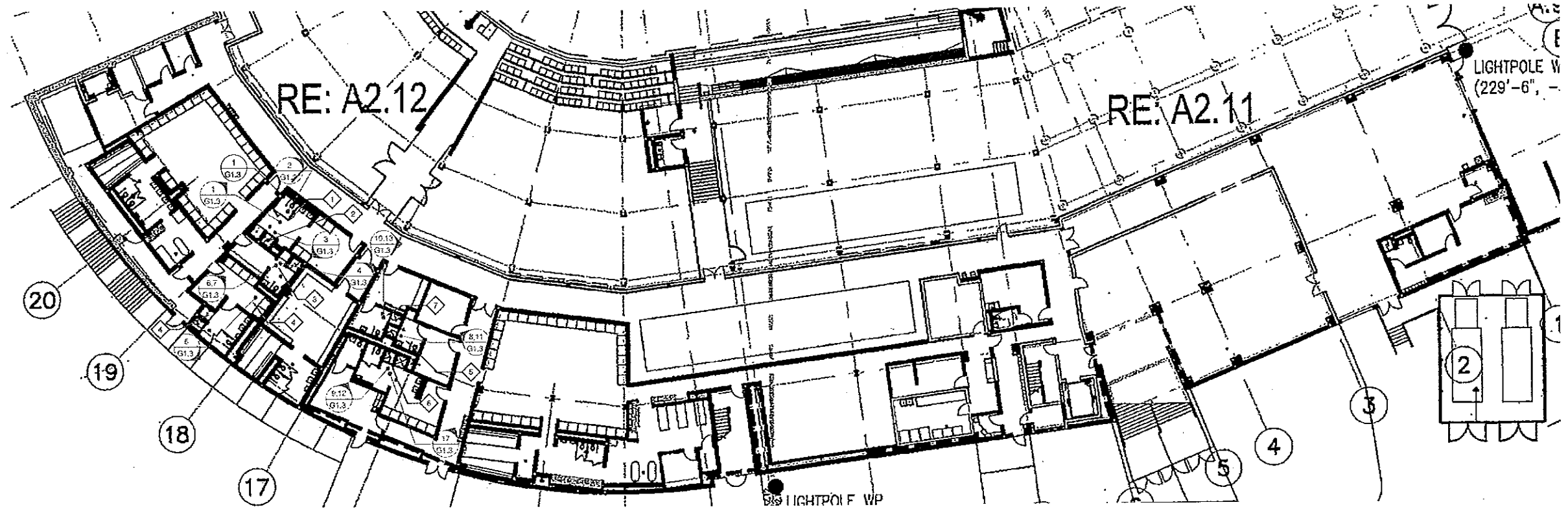
STANDARD MATERIALS



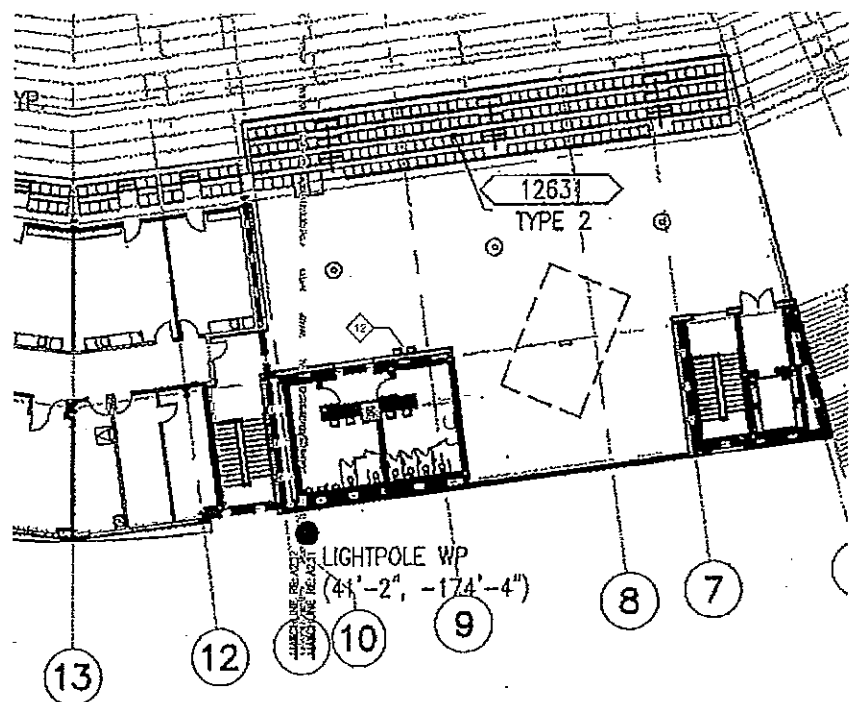
ADA INFORMATION

VERIFY ADA REQUIREMENTS WITH JURISDICTION AND CURRENT BUILDING CODES PRIOR TO CONSTRUCTION





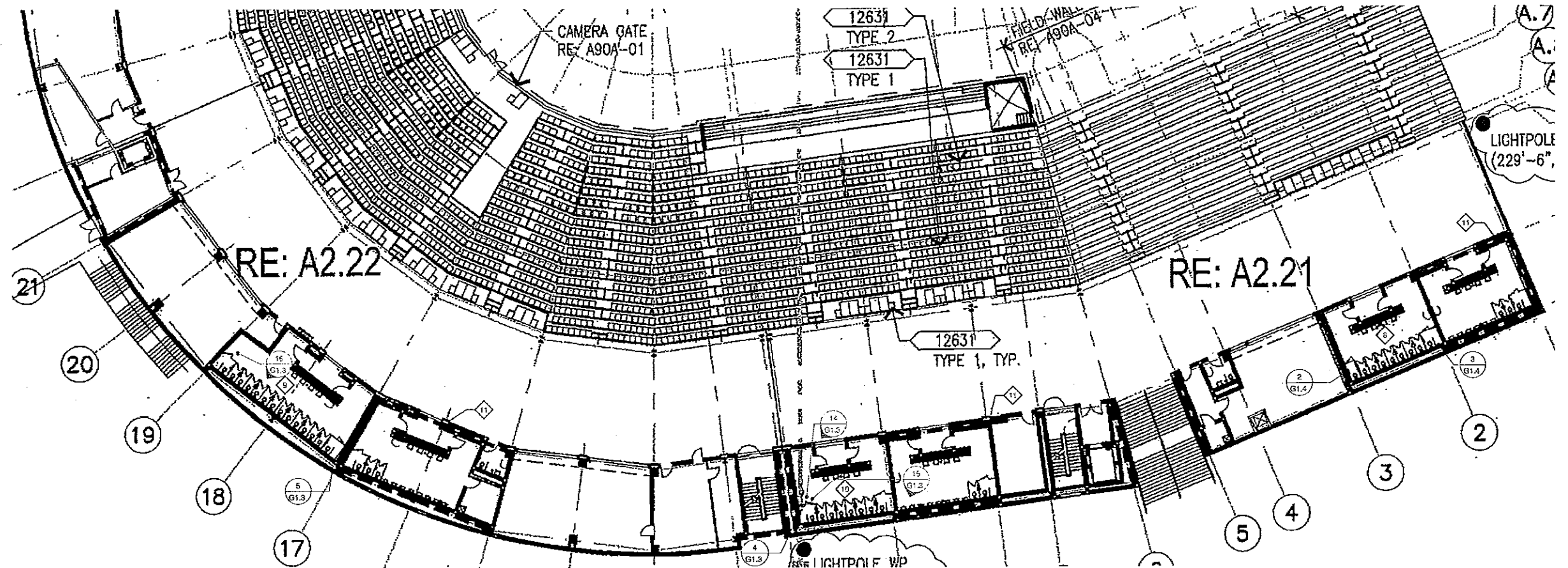
1 EXISTING FLOOR PLAN - SERVICE LEVEL
SCALE: 1/16" = 1'-0"



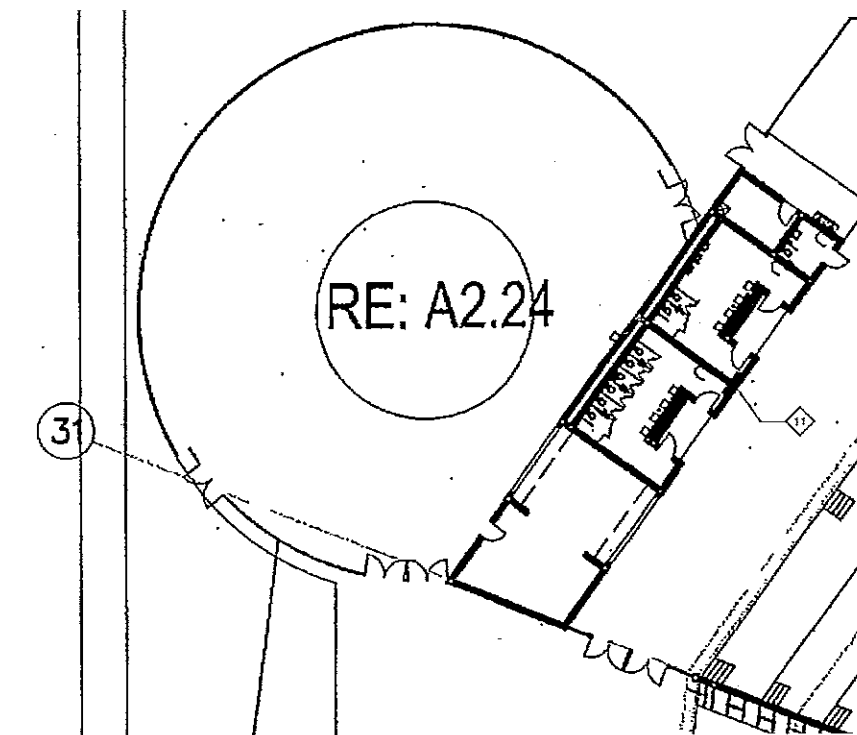
2 EXISTING FLOOR PLAN - MEZZANINE LEVEL (EXTERIOR)
SCALE: 1/16" = 1'-0"

PLAN KEY DESCRIPTION

1. A. REMOUNT SIDE GRAB BAR TO MAX 12" FROM REAR WALL AND MIN 54" ON FAR END, AND AT 33'-36" AFF.
B. PROVIDE NEW PLASTERS AND REHANG STALL DOOR TO BE MAX 4" FROM ADJACENT STALL PARTITION AND ON STALL WALL FURTHEST FROM TOILET.
C. ADJUST STALL DOOR TO BE SELF-CLOSING AND INSTALL EXTERIOR STALL HARDWARE OPERABLE WITHOUT TIGHT PINCH OR GRASP.
D. PROVIDE CANE DETECTABLE BOX BELOW PAPER TOWEL DISPENSER.
E. REMOUNT TOILET TO WITHIN 16"-18" FROM ADJACENT STALL WALL.
2. A. REMOUNT HAND HELD SHOWER TO MAX 48" AFF.
B. ADJUST SHOWER CONTROLS TO BE OPERABLE WITH LESS THAN 5 LBS OF FORCE.
C. REMOVE TILE FROM WALL OPPOSITE SHOWER CONTROL WALL AND WALL ADJACENT TO SHOWER CONTROL WALL TO CREATE MIN 36"X36" SIZE SHOWER STALL. REPAINT STRIPPED WALLS WITH EPOXY PAINT AND SKIM COAT PLASTER.
3. A. CORRECT SLOPE AT DRAIN TO NO MORE THAN 2.08% IN ANY DIRECTION. ADJUST DRAIN HEIGHT - FILL "FLOOR DISH" TO NEW HEIGHT.
B. REDUCE CURB AT SHOWER TO NO MORE THAN 1/2".
C. REMOUNT SHOWER BENCH SO THAT FRONT EDGE IS WITHIN 3" OF OPENING AND 14"-15" FROM SEAT WALL TO FRONT OF "L".
D. ENLARGE SIZE OF SHOWER STALL TO MIN 36"X36" BY REMOVING WALL TILE FROM WALL OPPOSITE SHOWER CONTROL WALL. REPAINT STRIPPED WALLS WITH EPOXY PAINT AND SKIM COAT PLASTER.
4. A. REMOUNT SHOWER BENCH SO THAT FRONT EDGE IS WITHIN 3" OF OPENING, 14"-15" FROM SEAT WALL TO FRONT OF "L", AND TOP OF SEAT IS 17'-19" AFF.
B. REPLACE SHOWER BASIN WITH ONE THAT IS MIN 36"X36" LARGE.
C. REMOUNT HAND HELD SHOWER UNIT TO MAX 48" AFF.
5. A. CORRECT SLOPE AT DRAIN TO NO MORE THAN 2.08% IN ANY DIRECTION. ADJUST DRAIN HEIGHT - FILL "FLOOR DISH" TO NEW HEIGHT.
B. ADJUST SHOWER CONTROL TO BE OPERABLE WITH LESS THAN 5 LBS OF FORCE.
C. ENLARGE SHOWER STALL BY REMOVING FINISHES, SHEET ROCK, AND STUDS. REPLACE WALL WITH ONE SIZE SMALLER STUD WALLS, RE-APPLY SHEET ROCK, SKIM COAT, AND PAINT NEW WALL.
D. REMOUNT LAVATORY SO TOP OF RIM IS MAX 34" AFF.
6. A. REMOUNT SHOWER BENCH SO THAT FRONT EDGE IS WITHIN 3" OF OPENING, 14"-15" FROM SEAT WALL TO FRONT OF "L", AND TOP OF SEAT IS 17'-19" AFF.
B. CORRECT SLOPE AT DRAIN TO NO MORE THAN 2.08% IN ANY DIRECTION. ADJUST DRAIN HEIGHT - FILL "FLOOR DISH" TO NEW HEIGHT.
C. ENLARGE SHOWER STALL BY REMOVING FINISHES, SHEET ROCK, AND STUDS. REPLACE WALL WITH ONE SIZE SMALLER STUD WALLS, RE-APPLY SHEET ROCK, SKIM COAT, AND PAINT NEW WALL.
7. A. REMOUNT SHOWER BENCH SO THAT FRONT EDGE IS WITHIN 3" OF OPENING, 14"-15" FROM SEAT WALL TO FRONT OF "L", AND TOP OF SEAT IS 17'-19" AFF.
B. REMOUNT HAND HELD SHOWER UNIT TO MAX 48" AFF.
C. ADJUST SHOWER CONTROL TO BE OPERABLE WITH LESS THAN 5 LBS OF FORCE.
D. CORRECT SLOPE AT DRAIN TO NO MORE THAN 2.08% IN ANY DIRECTION. ADJUST DRAIN HEIGHT - FILL "FLOOR DISH" TO NEW HEIGHT.
8. A. PROVIDE NEW PLASTERS AND REHANG ACCESSIBLE STALL DOOR TO BE MAX 4" FROM ADJACENT STALL PARTITION AND ON THE STALL WALL FARTHEST FROM TOILET.
B. TRANSFORM STALL TO AMBULATORY STALL WITH A WIDTH OF 35'-37".
C. AMBULATORY STALL: PROVIDE (2) GRAB BARS AND MOUNT ON BOTH SIDES OF STALL AT MAX 12" FROM REAR WALL AND MIN 54" ON FAR END, AND AT 33'-36" AFF.
D. AMBULATORY STALL: REMOUNT CENTER OF TOILET PAPER DISPENSER 7'-9" FROM FRONT OF TOILET, 15'-48" AFF, AND MIN 12" ABOVE OR 1.5" BELOW GRAB BAR.
E. AMBULATORY STALL: REMOUNT SANITARY DISPENSER AT 15'-48" AFF AND MIN 12" ABOVE OR 1.5" BELOW GRAB BAR.
9. A. REMOUNT GRAB BARS ON BOTH SIDES OF AMBULATORY STALL AT MAX 12" FROM REAR WALL AND MIN 54" ON FAR END, AND AT 33'-36" AFF.
B. ADJUST STALL DOOR TO BE SELF-CLOSING AND REPLACED STALL HARDWARE WITH HARDWARE OPERABLE WITHOUT TIGHT GRASP OR PINCH IN BOTH THE AMBULATORY AND ACCESSIBLE STALLS.
C. AMBULATORY STALL: REMOUNT TOILET PAPER DISPENSER AT MIN 12" ABOVE OR 1.5" BELOW GRAB BAR AS WELL AS 48" MAX AFF.
10. A. REMOUNT GRAB BARS ON BOTH SIDES OF AMBULATORY STALL AT MAX 12" FROM REAR WALL AND MIN 54" ON FAR END, AND AT 33'-36" AFF.
B. ADJUST STALL DOOR TO BE SELF-CLOSING AND REPLACED STALL HARDWARE WITH HARDWARE OPERABLE WITHOUT TIGHT GRASP OR PINCH IN THE AMBULATORY STALLS.
C. LOWER HOOK IN AMBULATORY STALL TO MAX 48" AFF.
11. A. ADJUST DRINKING FOUNTAIN CONTROLS SO A MAX OF 5 LBS OF FORCE IS REQUIRED TO OPERATE DRINKING FOUNTAIN.
12. A. ADJUST HI-BOWL DRINKING FOUNTAIN CONTROLS SO A MAX OF 5 LBS OF FORCE IS REQUIRED TO OPERATE DRINKING FOUNTAIN.



1 EXISTING FLOOR PLAN - CONCOURSE LEVEL
SCALE: 1/16" = 1'-0"



2 EXISTING FLOOR PLAN - CONCOURSE LEVEL - PICNIC AREA RESTROOMS
SCALE: 1/16" = 1'-0"

PLAN KEY DESCRIPTION

- A. REMOUNT SIDE GRAB BAR TO MAX 12" FROM REAR WALL AND MIN 54" ON FAR END, AND AT 33'-36" AFF.
- B. PROVIDE NEW PLASTERS AND REHANG STALL DOOR TO BE MAX 4" FROM ADJACENT STALL PARTITION AND ON STALL WALL FURTHEST FROM TOILET.
- C. ADJUST STALL DOOR TO BE SELF-CLOSING AND INSTALL EXTERIOR STALL HARDWARE OPERABLE WITHOUT TIGHT GRASP OR PINCH.
- D. PROVIDE CANE DETECTABLE BOX BELOW PAPER TOWEL DISPENSER.
- E. REMOUNT TOILET TO WITHIN 16'-18" FROM ADJACENT STALL WALL.
- A. REMOUNT HAND HELD SHOWER TO MAX 48" AFF.
- B. ADJUST SHOWER CONTROLS TO BE OPERABLE WITH LESS THAN 5 LBS OF FORCE.
- C. REMOVE TILE FROM WALL OPPOSITE SHOWER CONTROL WALL AND WALL ADJACENT TO SHOWER CONTROL WALL TO CREATE MIN 36"X36" SIZE SHOWER STALL. REPAINT STRIPPED WALLS WITH EPOXY PAINT AND SKIM COAT PLASTER.
- A. CORRECT SLOPE AT DRAIN TO NO MORE THAN 2.08% IN ANY DIRECTION. ADJUST DRAIN HEIGHT - FILL "FLOOR DISH" TO NEW HEIGHT.
- B. REDUCE CURB AT SHOWER TO NO MORE THAN 1/2".
- C. REMOUNT SHOWER BENCH SO THAT FRONT EDGE IS WITHIN 3" OF OPENING AND 14'-15" FROM SEAT WALL TO FRONT OF "L".
- D. ENLARGE SIZE OF SHOWER STALL TO MIN 36"X36" BY REMOVING WALL TILE FROM WALL OPPOSITE SHOWER CONTROL WALL; REPAINT STRIPPED WALLS WITH EPOXY PAINT AND SKIM COAT PLASTER.
- A. REMOUNT SHOWER BENCH SO THAT FRONT EDGE IS WITHIN 3" OF OPENING, 14'-15" FROM SEAT WALL TO FRONT OF "L", AND TOP OF SEAT IS 17'-19" AFF.
- B. REPLACE SHOWER BASIN WITH ONE THAT IS MIN 36"X36" LARGE.
- C. REMOUNT HAND HELD SHOWER UNIT TO MAX 48" AFF.
- A. CORRECT SLOPE AT DRAIN TO NO MORE THAN 2.08% IN ANY DIRECTION. ADJUST DRAIN HEIGHT - FILL "FLOOR DISH" TO NEW HEIGHT.
- B. ADJUST SHOWER CONTROL TO BE OPERABLE WITH LESS THAN 5 LBS OF FORCE.
- C. ENLARGE SHOWER STALL BY REMOVING FINISHES, SHEET ROCK, AND STUDS. REPLACE WALL WITH ONE SIZE SMALLER STUD WALLS, RE-APPLY SHEET ROCK, SKIM COAT, AND PAINT NEW WALL.
- D. REMOUNT LAVATORY SO TOP OF RM IS MAX 34" AFF.
- A. REMOUNT SHOWER SEAT TO BE 17'-19" AFF.
- B. CORRECT SLOPE AT DRAIN TO NO MORE THAN 2.08% IN ANY DIRECTION. ADJUST DRAIN HEIGHT - FILL "FLOOR DISH" TO NEW HEIGHT.
- C. ENLARGE SHOWER STALL BY REMOVING FINISHES, SHEET ROCK, AND STUDS. REPLACE WALL WITH ONE SIZE SMALLER STUD WALLS, RE-APPLY SHEET ROCK, SKIM COAT, AND PAINT NEW WALL.
- A. REMOUNT SHOWER BENCH SO THAT FRONT EDGE IS WITHIN 3" OF OPENING, 14'-15" FROM SEAT WALL TO FRONT OF "L", AND TOP OF SEAT IS 17'-19" AFF.
- B. REMOUNT HAND HELD SHOWER UNIT TO MAX 48" AFF.
- C. ADJUST SHOWER CONTROL TO BE OPERABLE WITH LESS THAN 5 LBS OF FORCE.
- D. CORRECT SLOPE AT DRAIN TO NO MORE THAN 2.08% IN ANY DIRECTION. ADJUST DRAIN HEIGHT - FILL "FLOOR DISH" TO NEW HEIGHT.
- A. PROVIDE NEW PLASTERS AND REHANG ACCESSIBLE STALL DOOR TO BE MAX 4" FROM ADJACENT STALL PARTITION AND ON THE STALL WALL FARTHEST FROM TOILET.
- B. TRANSFORM STALL TO AMBULATORY STALL WITH A WIDTH OF 35'-37".
- C. AMBULATORY STALL: PROVIDE (2) GRAB BARS AND MOUNT ON BOTH SIDES OF STALL AT MAX 12" FROM REAR WALL AND MIN 54" ON FAR END, AND AT 33'-36" AFF.
- D. AMBULATORY STALL: REMOUNT CENTER OF TOILET PAPER DISPENSER 7'-8" FROM FRONT OF TOILET, 15'-48" AFF, AND MIN 12" ABOVE OR 1.5" BELOW GRAB BAR.
- E. AMBULATORY STALL: REMOUNT SANITARY DISPENSER AT 15'-48" AFF AND MIN 12" ABOVE OR 1.5" BELOW GRAB BAR.
- A. REMOUNT GRAB BARS ON BOTH SIDES OF AMBULATORY STALL AT MAX 12" FROM REAR WALL AND MIN 54" ON FAR END, AND AT 33'-36" AFF.
- B. ADJUST STALL DOOR TO BE SELF-CLOSING AND REPLACED STALL HARDWARE WITH HARDWARE OPERABLE WITHOUT TIGHT GRASP OR PINCH IN BOTH THE AMBULATORY AND ACCESSIBLE STALLS.
- C. AMBULATORY STALL: REMOUNT TOILET PAPER DISPENSER AT MIN 12" ABOVE OR 1.5" BELOW GRAB BAR AS WELL AS 48" MAX AFF.
- A. REMOUNT GRAB BARS ON BOTH SIDES OF AMBULATORY STALL AT MAX 12" FROM REAR WALL AND MIN 54" ON FAR END, AND AT 33'-36" AFF.
- B. ADJUST STALL DOOR TO BE SELF-CLOSING AND REPLACED STALL HARDWARE WITH HARDWARE OPERABLE WITHOUT TIGHT GRASP OR PINCH IN THE AMBULATORY STALLS.
- C. LOWER HOOK IN AMBULATORY STALL TO MAX 48" AFF.
- A. ADJUST DRINKING FOUNTAIN CONTROLS SO A MAX OF 5 LBS OF FORCE IS REQUIRED TO OPERATE DRINKING FOUNTAIN.
- A. ADJUST H-BOWL DRINKING FOUNTAIN CONTROLS SO A MAX OF 5 LBS OF FORCE IS REQUIRED TO OPERATE DRINKING FOUNTAIN.



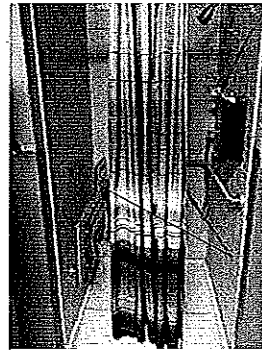
ADJUST STALL DOOR TO BE SELF-CLOSING

INSTALL EXTERIOR STALL HARDWARE THAT IS OPERABLE WITHOUT A TIGHT PINCH OR GRASP

1 OFFICIALS' RESTROOM SCALE: NTS



2 OFFICIALS' RESTROOM SCALE: NTS

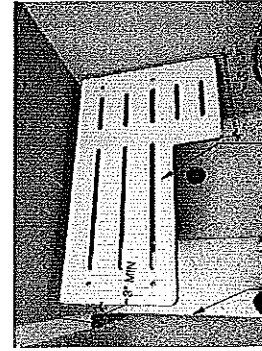


RE-MOUNT HAND HELD SHOWER SPRAY UNIT TO MAX 48" AFF.

ADJUST SHOWER CONTROL TO BE OPERABLE WITH LESS THAN 5 LBS OF FORCE

REMOVE TILE FROM WALLS AND REPAIR WITH EPOXY PAINT

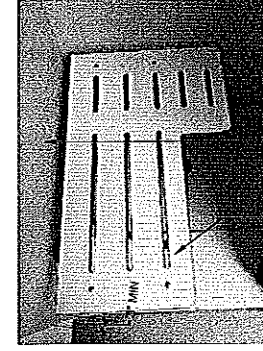
3 OFFICIALS' SHOWER STALL SCALE: NTS



RE-MOUNT SHOWER BENCH SO THE FRONT EDGE IS WITHIN 3" OF THE OPENING AND 14"-15" FROM WALL TO FRONT OF L-SEAT.

REDUCE CURB AT SHOWER TO MAX 1/2"

4 VISITING MANAGER'S SHOWER STALL SCALE: NTS

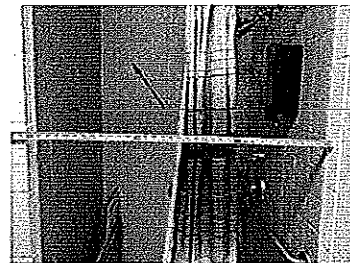
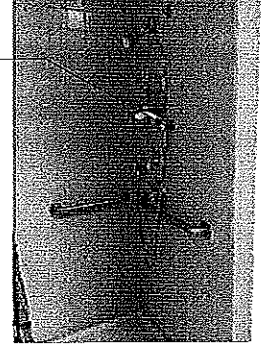


RE-MOUNT HAND HELD SHOWER SPRAY UNIT TO MAX 48" AFF.

REMOVE TILE FROM WALLS AND REPAIR WITH EPOXY PAINT

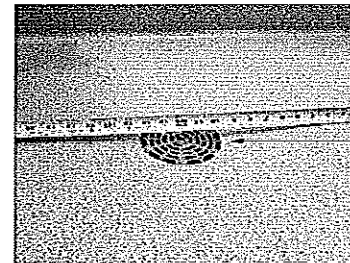
RE-MOUNT SHOWER BENCH SO THE FRONT EDGE IS WITHIN 3" OF THE OPENING AND 14"-15" FROM WALL TO FRONT OF L-SEAT.

5 VISITING COACHES' SHOWER STALL SCALE: NTS



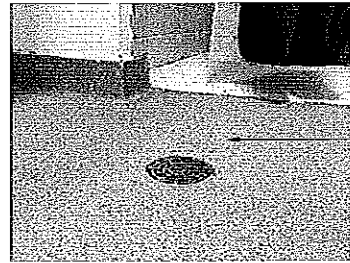
REMOVE TILE FROM WALLS AND REPAIR WITH EPOXY PAINT TO CREATE 36"x36" CLEAR DIVERSION IN SHOWER

6 VISITING MANAGER'S SHOWER STALL SCALE: NTS



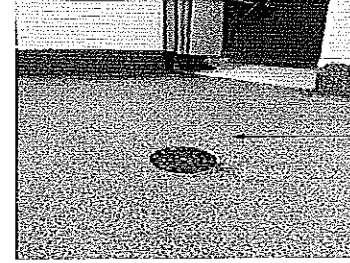
CORRECT SLOPE AT DRAIN IN FRONT OF SHOWER TO MAX 2.08% IN ANY DIRECTION

7 VISITING MANAGER'S SHOWER ROOM SCALE: NTS



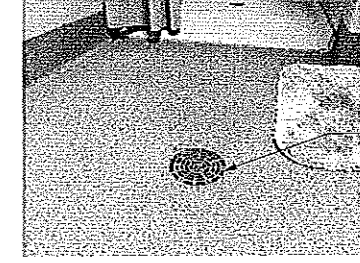
CORRECT SLOPE AT DRAIN IN FRONT OF SHOWER TO MAX 2.08% IN ANY DIRECTION

8 HOME MANAGER'S SHOWER ROOM SCALE: NTS



CORRECT SLOPE AT DRAIN IN FRONT OF SHOWER TO MAX 2.08% IN ANY DIRECTION

9 HOME COACHES' SHOWER ROOM SCALE: NTS



CORRECT SLOPE AT DRAIN IN FRONT OF SHOWER TO MAX 2.08% IN ANY DIRECTION

10 STAR/MASCOT SHOWER ROOM SCALE: NTS



ENLARGE SHOWER STALL TO MIN 35"x36" BY REMOVING FINISHES, SHEET ROCK, AND STUDS. REPLACE WALL WITH ONE SIZE SMALLER STUD WALLS, RE-APPLY SHEET ROCK, SKIM COAT, AND PAINT NEW WALL.

ADJUST SHOWER CONTROL TO BE OPERABLE WITH LESS THAN 5 LBS OF FORCE

11 HOME MANAGER'S SHOWER STALL SCALE: NTS



LOWER SHOWER SEAT TO 17"-19" AFF

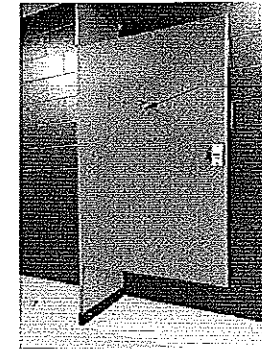
12 HOME COACHES' SHOWER STALL SCALE: NTS



RE-MOUNT HAND HELD SHOWER SPRAY UNIT TO MAX 48" AFF.

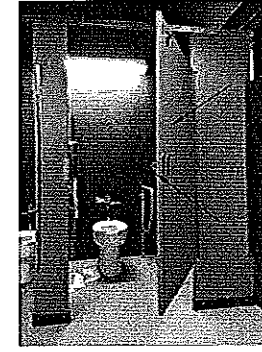
ADJUST SHOWER CONTROL TO BE OPERABLE WITH LESS THAN 5 LBS OF FORCE

13 STAR/MASCOT SHOWER STALL SCALE: NTS



LOWER HOOK TO BE MAX 48" AFF

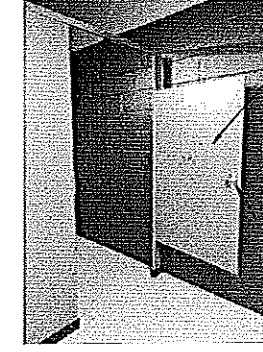
14 WOMEN'S RESTROOM STALL SCALE: NTS



ADJUST STALL DOOR TO BE SELF-CLOSING

INSTALL STALL DOOR HARDWARE THAT IS OPERABLE WITHOUT A TIGHT PINCH OR GRASP

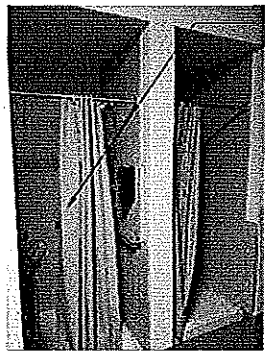
15 WOMEN'S RESTROOM STALL SCALE: NTS



ADJUST STALL DOOR TO BE SELF-CLOSING

INSTALL STALL DOOR HARDWARE THAT IS OPERABLE WITHOUT A TIGHT PINCH OR GRASP

16 WOMEN'S RESTROOM STALL SCALE: NTS



ENLARGE SHOWER STALL TO MIN 35"x36" BY REMOVING FINISHES, SHEET ROCK, AND STUDS. REPLACE WALL WITH ONE SIZE SMALLER STUD WALLS, RE-APPLY SHEET ROCK, SKIM COAT, AND PAINT NEW WALL.

17 HOME COACHES' SHOWER STALL SCALE: NTS

PLAN KEY DESCRIPTION

1. A. REMOUNT SIDE GRAB BAR TO MAX 12" FROM REAR WALL AND MIN 54" ON FAR END, AND AT 33"-36" AFF.
- B. PROVIDE NEW PLASTERS AND REHANG STALL DOOR TO BE MAX 4" FROM ADJACENT STALL PARTITION AND ON STALL WALL FURTHEST FROM TOILET.
- C. ADJUST STALL DOOR TO BE SELF-CLOSING AND INSTALL EXTERIOR STALL HARDWARE OPERABLE WITHOUT TIGHT PINCH OR GRASP.
- D. PROVIDE CANE DETECTABLE BOX BELOW PAPER TOWEL DISPENSER.
- E. REMOUNT TOILET TO WITHIN 16"-18" FROM ADJACENT STALL WALL.

2. A. REMOUNT HAND HELD SHOWER TO MAX 48" AFF.
- B. ADJUST SHOWER CONTROLS TO BE OPERABLE WITH LESS THAN 5 LBS OF FORCE.
- C. REMOVE TILE FROM WALL OPPOSITE SHOWER CONTROL WALL AND WALL ADJACENT TO SHOWER CONTROL WALL TO CREATE MIN 36"x36" SIZE SHOWER STALL. REPAIR STRIPPED WALLS WITH EPOXY PAINT AND SKIM COAT PLASTER.

3. A. CORRECT SLOPE AT DRAIN TO NO MORE THAN 2.08% IN ANY DIRECTION. ADJUST DRAIN HEIGHT - FILL "FLOOR DISH" TO NEW HEIGHT.
- B. REDUCE CURB AT SHOWER TO NO MORE THAN 1/2".
- C. REMOUNT SHOWER BENCH SO THAT FRONT EDGE IS WITHIN 3" OF OPENING AND 14"-15" FROM SEAT WALL TO FRONT OF "L".
- D. ENLARGE SIZE OF SHOWER STALL TO MIN 35"x36" BY REMOVING WALL TILE FROM WALL OPPOSITE SHOWER CONTROL WALL; REPAIR STRIPPED WALLS WITH EPOXY PAINT AND SKIM COAT PLASTER.

4. A. REMOUNT SHOWER BENCH SO THAT FRONT EDGE IS WITHIN 3" OF OPENING, 14"-15" FROM SEAT WALL TO FRONT OF "L", AND TOP OF SEAT IS 17"-19" AFF.
- B. REPLACE SHOWER BASIN WITH ONE THAT IS MIN 36"x36" LARGE.
- C. REMOUNT HAND HELD SHOWER UNIT TO MAX 48" AFF.

5. A. CORRECT SLOPE AT DRAIN TO NO MORE THAN 2.08% IN ANY DIRECTION. ADJUST DRAIN HEIGHT - FILL "FLOOR DISH" TO NEW HEIGHT.
- B. ADJUST SHOWER CONTROL TO BE OPERABLE WITH LESS THAN 5 LBS OF FORCE.
- C. ENLARGE SHOWER STALL BY REMOVING FINISHES, SHEET ROCK, AND STUDS. REPLACE WALL WITH ONE SIZE SMALLER STUD WALLS, RE-APPLY SHEET ROCK, SKIM COAT, AND PAINT NEW WALL.
- D. REMOUNT LAVATORY SO TOP OF RIM IS MAX 34" AFF.

6. A. REMOUNT SHOWER SEAT TO BE 17"-19" AFF.
- B. CORRECT SLOPE AT DRAIN TO NO MORE THAN 2.08% IN ANY DIRECTION. ADJUST DRAIN HEIGHT - FILL "FLOOR DISH" TO NEW HEIGHT.
- C. ENLARGE SHOWER STALL BY REMOVING FINISHES, SHEET ROCK, AND STUDS. REPLACE WALL WITH ONE SIZE SMALLER STUD WALLS, RE-APPLY SHEET ROCK, SKIM COAT, AND PAINT NEW WALL.

7. A. REMOUNT SHOWER BENCH SO THAT FRONT EDGE IS WITHIN 3" OF OPENING, 14"-15" FROM SEAT WALL TO FRONT OF "L", AND TOP OF SEAT IS 17"-19" AFF.
- B. REMOUNT HAND HELD SHOWER UNIT TO MAX 48" AFF.
- C. ADJUST SHOWER CONTROL TO BE OPERABLE WITH LESS THAN 5 LBS OF FORCE.
- D. CORRECT SLOPE AT DRAIN TO NO MORE THAN 2.08% IN ANY DIRECTION. ADJUST DRAIN HEIGHT - FILL "FLOOR DISH" TO NEW HEIGHT.

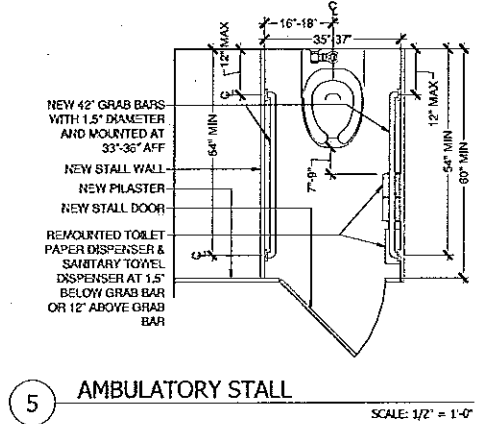
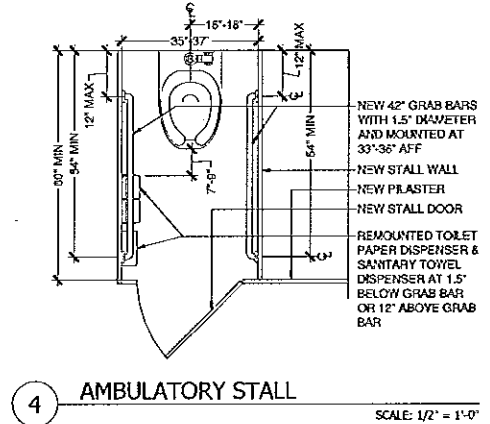
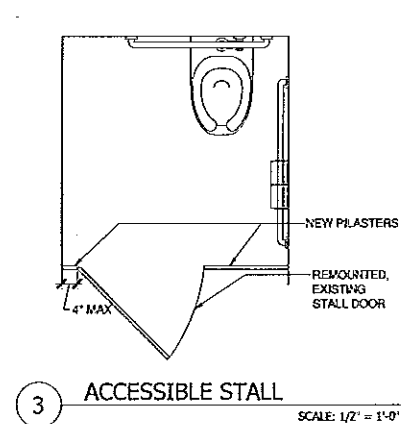
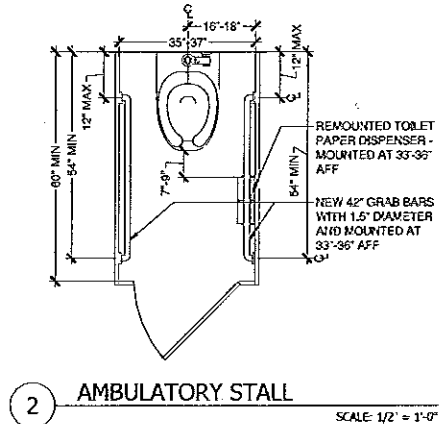
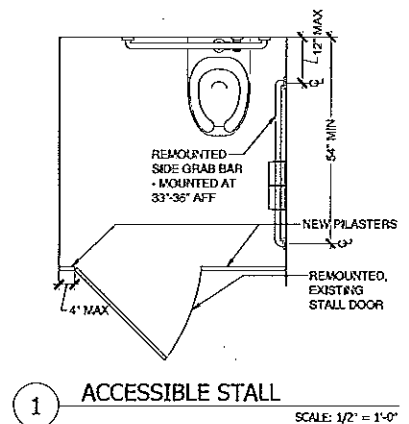
8. A. PROVIDE NEW PLASTERS AND REHANG ACCESSIBLE STALL DOOR TO BE MAX 4" FROM ADJACENT STALL PARTITION AND ON THE STALL WALL FURTHEST FROM TOILET.
- B. TRANSFORM STALL TO AMBULATORY STALL WITH A WIDTH OF 35"-37".
- C. AMBULATORY STALL: PROVIDE (2) GRAB BARS AND MOUNT ON BOTH SIDES OF STALL AT MAX 12" FROM REAR WALL AND MIN 54" ON FAR END, AND AT 33"-36" AFF.
- D. AMBULATORY STALL: REMOUNT CENTER OF TOILET PAPER DISPENSER 7'-9" FROM FRONT OF TOILET, 15'-48" AFF, AND MIN 12" ABOVE OR 1.5" BELOW GRAB BAR.
- E. AMBULATORY STALL: REMOUNT SANITARY DISPENSER AT 15'-43" AFF AND MIN 12" ABOVE OR 1.5" BELOW GRAB BAR.

9. A. REMOUNT GRAB BARS ON BOTH SIDES OF AMBULATORY STALL AT MAX 12" FROM REAR WALL AND MIN 54" ON FAR END, AND AT 33"-36" AFF.
- B. ADJUST STALL DOOR TO BE SELF-CLOSING AND REPLACED STALL HARDWARE WITH HARDWARE OPERABLE WITHOUT TIGHT GRASP OR PINCH IN BOTH THE AMBULATORY AND ACCESSIBLE STALLS.
- C. AMBULATORY STALL: REMOUNT TOILET PAPER DISPENSER AT MIN 12" ABOVE OR 1.5" BELOW GRAB BAR AS WELL AS 48" MAX AFF.

10. A. REMOUNT GRAB BARS ON BOTH SIDES OF AMBULATORY STALL AT MAX 12" FROM REAR WALL AND MIN 54" ON FAR END, AND AT 33"-36" AFF.
- B. ADJUST STALL DOOR TO BE SELF-CLOSING AND REPLACED STALL HARDWARE WITH HARDWARE OPERABLE WITHOUT TIGHT GRASP OR PINCH IN THE AMBULATORY STALLS.
- C. LOWER HOOK IN AMBULATORY STALL TO MAX 48" AFF.

11. A. ADJUST DRINKING FOUNTAIN CONTROLS SO A MAX OF 5 LBS OF FORCE IS REQUIRED TO OPERATE DRINKING FOUNTAIN.

12. A. ADJUST RE-BOWLING FOUNTAIN CONTROLS SO A MAX OF 5 LBS OF FORCE IS REQUIRED TO OPERATE DRINKING FOUNTAIN.



PROJECT SUMMARY

1. This project involves several miscellaneous modifications necessary for the City of Cedar Rapids to comply with the DOI survey of deficiencies for this facility. The work in this project is limited only to those items cited in the DOI survey list, also included on this sheet, and the work identified in these drawings. Any inconsistency shall be brought to the attention of the City's designated representative. These plus specification notes shall provide for the expected level of quality for each item in the scope of work. It is the intent of the Owner to have all items complete by December 31, 2016.

Contractor note: Not all the work will be confined to the specific boundaries and designated items as shown on the drawings. Work necessary for any connections to mechanical or electrical equipment and that fall outside the confines of the designated areas, is still considered part of the work. The boundaries shown are to designate the principal areas of the remodeling and are intended to show the preferred extent of Contractor's primary activity, which allows Owner's use of the remaining spaces.

DIVISION 1- GENERAL NOTES

1. Owner Furnished Items- Note
2. Schedule: The Owner's preferred schedule is to have all work substantially complete by December 31, 2016. The Contractor shall provide a schedule of work and a list of those priorities and needs genuine to his completing the work within the prescribed time limits for Owner and Architect's review and consideration. It is the intent of the Owner to cooperate and assist the Contractor to achieve this schedule. The Contractor will have access to all areas of the site and building immediately upon award of the contract.
3. Temporary Facilities: Water and Electrical services will be available to the Contractor at the Owner's expense. Coordinate power and water usage during construction. Coordinate use of electrical services with Owner. Provide temporary distribution for power tools and construction equipment that isolates construction activity from Owner's normal use, and protect existing distribution equipment from overloads and spikes or drops in service.
4. Seal all areas of the work by taping off the doors of each room or similar method to prevent dust migration. Clean any public areas outside rooms every day following construction activity.
5. Owner will allow temporary staging of materials in the large open areas of the arena concourse and outside in the public parking areas if so requested. Contractor will be allowed on-site parking in the adjacent parking lots.
6. The contractor must cooperate with the Owner's need for security anywhere within the existing facility, and as the work affects any of the existing building services, such as electrical power and gas. Security concerns will be reviewed during the pre-construction with the Owner.
7. Provide construction barriers around all areas of proposed work to protect the general public and the Owner's operations employees from construction activity. Clean any public areas outside barriers every day following construction activity.
8. Cutting and patching of existing walls, ceilings and floors may be necessary as a part of this work. Confirm condition and construction of all walls and existing construction slated to remain. No additional compensation will be made for minor patching necessary after existing wall finish, floor finish are removed, or for those surfaces that remain.
9. Payments to the Contractor will be made following the procedure listed in the project manual and after Contractor has completed and submitted an application for payment on AIA form G701 and 702.
10. Become aware of any buried utility lines or hidden elements on or near the area of construction and protect same during construction.
11. Notify Owner and Architect prior to cutting or modifying any utility lines.
12. All streets and drives shall remain open at all times during construction. Park only in designated spaces.
13. Storage of materials on-site shall be allowed at the Contractor's risk.
14. Familiarize yourself with all on-site conditions prior to construction and notify Owner and Architect of any discrepancies discovered with investigation.
15. The Owner's normal business hours are 7:00 AM to 5 PM M-F. Unless otherwise approved by the Owner, the Contractor is expected to limit on-site work to these same hours.
16. Coordinate egress requirements with Owner and local Fire Marshall prior to beginning construction. Egress around the construction areas will be required at all times. The exact manner of egress during any point of construction shall be negotiated with the Owner and Fire Marshall.
17. Provide material substantially in a timely manner to coordinate with construction timing and material flow. Provide substantial as designated elsewhere in these Spec Notes. Allow for a minimum of one week for Owner review.
18. Provide necessary trained technical personnel to layout work on site.
19. Final clean site prior to requesting final review for substantial completion. Substantial completion will not be certified until entire site is cleared and all of this Contractor's materials and equipment are removed and properly disposed.
20. The specific manufacturers and materials listed below are for the contractor's guidance for the level of quality and performance in the finished work on this project. If the contractor wishes to make a substitution of any of the listed materials or manufacturers, the substitution must be made in writing prior to the bid, and if found acceptable will be included in an addendum. It is the Owner and Architect's intent to not make any substitutions after the bid.

DIVISION 3- CONCRETE

1. None anticipated.

DIVISION 4- MASONRY

1. None anticipated.

DIVISION 5- METALS

1. Submit shop drawings and indicate profiles, sizes, connection attachments, reinforcing, anchorage, size and type of fasteners, and accessories. Include erection drawings, elevations and details where applicable. Indicate welded connections using standard AWS welding symbols. Indicate net weld lengths.
- a. Material Quality shall conform to the following standards: Steel Sections: ASTM A36. Steel Tensile: ASTM A509, Grade B. ASTM A501, ASTM A53, Grade B. Bolts, Nuts and Washers: ASTM A307.
- c. Welding Materials: AWS D11. 1; type required for materials being welded.
2. For fabrication of the railings and other miscellaneous pieces and all accessories, comply with the following: Verify dimensions on site prior to shop fabrication. Fabricate items with joints tightly fitted and secured. Fit and shop assemble in largest practical sections, for delivery to site. Grind exposed welds flush and smooth with adjacent finished surface. Edge exposed edges to small uniform radii. Exposed Mechanical Fastenings: Flush countersink screws or bolts, unobtrusively located, consistent with design of structure, except where specifically noted otherwise. Make exposed joints butt tight, flush, and hairline.
3. Supply components required for anchorage of metal fabrications. Fabricate anchorage and related components of same material and finish as metal fabrication, except where specifically noted otherwise.
4. Clean surfaces of rust, scale, grease and foreign matter prior to finishing. Do not prime steel surfaces in direct contact bond with concrete or where field welding is required. Prime paint all steel fabricated items with one coat.
5. Provide rails and miscellaneous pieces from standard prime painted steel stock.
6. Cepe, weld and grind smooth all connections for rail. Prime paint prior to delivery to site.

DIVISION 6- CARPENTRY

1. Provide finish wallwork and cabinet work and install existing millwork as shown on the drawings complying with AWI Custom Quality Standards. Finishes will be chosen from a full range of colors for solid surfaces and laminates as manufactured by Formica, Wilsonart or Architect approved equivalent.
2. The general design intent is defined by the drawings. Submit shop drawings prior to manufacturing of any of the millwork items.
3. Cabinet hardware shall be consistent through-out and from a single manufacturer, Lawrence, Stanley, Krapp-Vogt or Architect approved equivalent.
4. Field installed items shall be free of defects, plumb, level and square. All joints shall be flush and even, and consistent with the design intent illustrated by the drawings. Contact Architect to clarify any items in this regard.
5. Provide shelving on Krapp-Vogt standards in storage areas and within cabinets as shown. Utilize 1/2" plywood or particleboard fully-wrapped in white melamine laminate.

DIVISION 7- THERMAL/MOISTURE PROTECTION

1. Provide sealants appropriate to the surrounding construction. All sealants shall be from a single source.
2. Provide sealants appropriate to the surrounding construction. All sealants shall be from a single source. Sealant shall be white interior grade latex for all areas to be painted. Seal all gaps between counter tops or cabinets and adjacent wall surfaces with clear sealant. All sealants for exterior use shall be one-part urethane such as NP-1 as manufactured by Soudabond or Architect approved equivalent.

DIVISION 8- DOORS AND HARDWARE

1. None anticipated, except for work involved in adjusting existing doors or hardware devices.

DIVISION 9- FINISHES

1. Provide metal stud framed gyp-board walls, where areas of the existing walls are designated for replacement or modification. Utilize 25 gauge 3-5/8" metal studs typically.
2. Provide 20-gauge sheet metal backing in walls where any wall-mounted fixtures, grab bars or brackets of any kind are to be installed. Backing shall span a maximum of 2 studs and be fully anchored to studs prior to applying wallboards and finishes. Height of backing shall correspond to 2X the height of the span to be wall-mounted in the locations as shown on the drawings.
3. Provide 5/8" gyp board for all interior surfaces. Fasten to framing utilizing self-tapping screws. Fill all screw holes and joints prior to paint. Comply with expected quality for commercial grade construction for plumb, square and level to achieve defect-free results.
4. Utilize gypsum wall board products and accessories as manufactured by USG or approved equivalent.
5. Final installation shall have a smooth, continuous, uninterrupted surface free of break joints or seams.
6. Paint only when temperature is 50 degrees or warmer, and relative humidity is less than 85%.
7. Take precautions to protect all existing floor finishes from construction activity. If damaged, replace vinyl, carpet or quarry tile pieces with matching units.
8. Provide ceramic wall and floor tile in areas as shown on the plans. Utilize American Ocean products to match existing as close as possible. Provide coved ceramic tile base marking the floor tile and by the same manufacturer. Comply with all manufacturers recommendations for the installation procedures and completed work. Utilize subcontractors familiar with ceramic tile work and acceptable to the Owner.
9. Provide 4" vinyl or rubber base for all areas as manufactured by Johns-Manville, Armstrong or Architect approved equivalent.
10. Utilize products manufactured by Glidden, Iowa Paint, Diamond Vogel or Architect approved equivalent.
11. For all metal surfaces, provide 1 rust-inhibitive type primer coat and 2 finish coats of industrial enamel.
12. For all gyp board surfaces, provide one coat latex primer and cover with two coats eggshell enamel.
13. For all masonry surfaces, provide 1 coat commercial block filler, 1 coat primer and 2 coats eggshell enamel.
14. Paint all exposed surfaces of block and prime painted masonry.

DIVISION 10- SPECIALTIES

1. Provide Grab Bars in configurations matching existing or in new configurations as designated on the plans, and as manufactured by Bobrick or Architect approved equivalent.

DIVISION 11- MISCELLANEOUS EQUIPMENT

1. None anticipated.

DIVISION 12- FURNISHINGS

1. None anticipated.

DIVISION 13- EQUIPMENT

1. None anticipated.

DIVISION 14- CONVEYING DEVICES

1. None anticipated.

DIVISIONS 15 AND 16- MECHANICAL AND ELECTRICAL

1. Any and all necessary mechanical and electrical work shall conform to current applicable codes in effect in this area and for this work. Coordinate any work on existing building systems with Owner's designated representative before modifying or altering them.

PLAN SPEC NOTES		DRAWN BY: SNU		APPROVED BY: AMV		DATE: 10/25/2016		NO.		REVISION		DATE			
CITY OF CEDAR RAPIDS VETERANS MEMORIAL STADIUM ADA COMPLIANCE												CEDAR RAPIDS, IA			
SHEET NO. G1.5												OF		FILE NAME: C0025 R0510	

ATTACHMENT D (revised) – REPORT OF ADA VIOLATIONS (Phase I)
Design Services for ADA Compliance of Veterans Memorial Stadium

The City's IIA conducted an access study at Veterans Memorial Stadium with the following findings.

LEGEND OF ABBREVIATIONS

AF – Above the finished floor (or finished ground)
AR – Accessible Route
CL – Change in Level
CFS – Clear floor space
LBF – Pounds of force

EXTERIOR

LOWER LEVEL

1. 023 Officials

1.1 Restrooms

023 (Officials): stall door lacks external hardware, not self-closing; door installed 10" from partition; paper towel protruding

Recommendations: (Multiple Users – Near Dugouts) (023 Officials)

- 1.1.1 Remove side grab bar to max 12" from the rear wall at the close end and min 54" on the far end, and 33" to 36" above the finished floor
- 1.1.2 Adjust stall door to be self-closing and install exterior stall hardware that is operable without a tight pinch or grasp
- 1.1.3 Rehang stall door to be max 4" from adjacent stall partition and on the stall wall farthest from the toilet
- 1.1.4 Relocate or recess towel dispenser to not interfere with general circulation path, protrusions can't be greater than 4"
- 1.1.5 Relocate sidewall, stall lacks required dimension for turning. (Construction to be complete by 12/12/16)
- 1.1.6 Relocate toilet is inaccessible because the centerline is 22" from the sidewall. (Construction to be complete by 12/12/16)

1.2 Locker Room

023 (Officials Locker Room): showers stall 36" x 35.75"; shower controls 53" above the finished floor; shower handle requires more than 5 lbs of force to use

Recommendations:

- 1.2.1 Enlarge shower stall, to compliant dimensions for a transfer shower of 36" deep by 36" wide with a 36" opening in 023 (Construction to be complete by 12/12/16)
- 1.2.2 Remove shower controls in to max 48" above the finished floor
- 1.2.3 Adjust shower control to be operable with less than 5 lbs of force

2. 024A Visiting Manager's Locker Room

2.1 Locker Rooms

24A (Visiting Manager's Locker Room): 62" to rotating lock, lock requires pinch to use; shelving unit 60"

24A (Visiting Manager's Locker Room): 0 of 1 locker accessible; 15.1% slope at edge of shower; 75" change in level to shower; shower bench 4" from front of compartment; front end of L-shaped shower bench 16" from wall

Recommendations:

- 2.1.1 Correct or repair slope at drain in front of shower to max 2.08% in any direction for level clear floor space
- 2.1.2 Remove or reduce curb at shower to max 5"
- 2.1.3 Remove shower bench so that the front edge is within 3" of the opening and 14" to 15" from seat wall to front of L (Construction to be complete by 12/12/16)
- 2.1.4 Enlarge shower stall, to compliant dimensions for a transfer shower of 36" deep by 36" wide with a 36" opening in (Construction to be complete by 12/12/16)

3. 024C Visiting Coach's Locker Room

3.1 Locker Rooms

24C (Visiting Coach's Locker Room): 62" to rotating lock, lock requires pinch to use; shelving unit 60"

24C (Visiting Coach's Locker Room): 0 of 6 lockers accessible; 72" hook; front end of L-shaped shower bench 16" from wall

Recommendations: (Visiting Coach's Locker Rooms)

- 3.1.1 Remove shower bench so that the front edge is within 3" of the opening and 14" to 15" from seat wall to front of L (Construction to be complete by 12/12/16)
- 3.1.2 Enlarge shower stall, to compliant dimensions for a transfer shower of 36" deep by 36" wide with a 36" opening (Construction to be complete by 12/12/16)
- 3.1.3 Enlarge shower stall, to compliant dimensions for a transfer shower of 36" deep by 36" wide with a 36" opening (Construction to be complete by 12/12/16)
- 3.1.4 Replace shower control is inaccessible because no shower spray unit is the right location (Construction to be complete by 12/12/16)

4. 018L Home Manager's Locker Room

4.1 Locker Rooms

018L (Home Manager's Locker Room): combination lock; shelf 60.5"; shower spray high

018L (Home Manager's Locker Room): 0 of 1 locker accessible (shelving); shower 34.75" deep, 34.25" wide; 7.8% at drain in clear floor space to transfer into shower; lacks folding seat, chair provided but non-compliant; shower handle requires more than 5 lbs of force to use

Recommendations: (Home Locker Rooms)

- 4.1.1 Enlarge shower stall, to compliant dimensions for a transfer shower of 36" deep by 36" wide with a 36" opening (Construction to be complete by 12/12/16)
- 4.1.2 Correct or repair slope at drain in front of shower to max 2.08% in any direction for level clear floor space in
- 4.1.3 Adjust shower control to be operable with less than 5 lbs of force

5. 018N Home Coach's Locker Room

5.1 Locker Rooms

018N (Home Coach's Locker Room): combination lock; shelf 60.5"; shower spray high

018N (Home Coach's Locker Room): 0 of 6 lockers accessible; hook 72" and above paper towel; folding bench 19.5" above the finished floor

Recommendations: (Home Locker Rooms)

- 5.1.1 Lower one hook in shower area to max 48" above the finished floor
- 5.1.2 Lower shower seat to 17" to 19" above the finished floor
- 5.1.3 Enlarge shower stall, to compliant dimensions for a transfer shower of 36" deep by 36" wide with a 36" opening (Construction to be complete by 12/12/16)
- 5.1.4 Correct or repair slope at drain in front of shower to max 2.08% in any direction for level clear floor space

6. 019 Star/Mascot Locker Room

6.1 Locker Rooms

019 (Star/Mascot Locker Room): showers stall 34.75" x 34.5"; shower controls 53" above the finished floor; shower handle requires more than 5 lbs of force to use

Recommendations: 019 (Star/Mascot Locker Room)

- 6.1.1 Enlarge shower stall, to compliant dimensions for a transfer shower of 36" deep by 36" wide with a 36" opening in (Construction to be complete by 12/12/16)
- 6.1.2 Correct or repair slope at drain in front of shower to max 2.08% in any direction for level clear floor space
- 6.1.3 Remove shower controls in to max 48" above the finished floor
- 6.1.4 Adjust shower control to be operable with less than 5 lbs of force

MAIN FLOOR / CONCOURSE

7. Women's Restroom on Concourse Near 101C (Far Right Field Restrooms)

7.1 Restrooms

WOMEN'S: door currently not installed but opening is across from toilet; toilet paper dispenser is too close; RESTROOMS lack ambulatory stalls but each have more than 6 compartments; side grab bar WOMEN'S extends to 53.25"

Recommendations: (Multiple Users – Near 101C) (Far Right Field Restrooms)

- 7.1.1 Create an ambulatory accessible stall with grab bars and fixtures mounted in correct locations and at correct heights in Women's Restroom (Construction to be complete by 12/12/16)
- 7.1.2 Rehang stall door to be max 4" from adjacent stall partition and on the stall wall farthest from the toilet

8. Women's Restroom on Concourse Near Home Plate (Near room 108)

8.1 Restrooms

WOMEN'S: ambulatory stall moveable side grab bar at 36.5"; ambulatory stall partition bar; ambulatory stall door not self-closing and has small external hardware; ambulatory stall toilet paper dispenser mounted above side grab bar; ambulatory stall wall side grab bar extends to 52.5"; moveable side short accessible toilet centerline 20"; accessible stall toilet paper dispenser too close; rear grab bars mounted incorrectly; side grab bars extends to 52.5"; accessible stall door not self-closing and has small external hardware; RESTROOMS lack means of egress

Recommendations: (Multiple Users – Near Home Plate) (Near room 108)

- 8.1.1 Remove side grab bar to max 12" from the rear wall at the close end and min 54" on the far end, and 33" to 36" above the finished floor in ambulatory
- 8.1.2 Adjust stall door to be self-closing and replace stall hardware with hardware operable without a tight pinch or grasp in both
- 8.1.3 Modify ambulatory stall to a design that complies with the 2010 Standards Women's Restroom (Construction to be complete by 12/12/16)
- 8.1.4 Adjust stall door to be self-closing and replace stall hardware with hardware operable without a tight pinch or grasp on ambulatory
- 8.1.5 Remove toilet paper in ambulatory to 12" above or 1.5" below grab bar

9. Women's Restroom on Concourse Near First Base Concession

9.1 Restrooms

WOMEN'S: ambulatory stall moveable side grab bar at 34" from partition to base; ambulatory stall door not self-closing and has small external hardware; ambulatory stall grab bar partition side extends to 53"; moveable portion small; ambulatory stall hook 53"; accessible stall door not self-closing and has small external hardware; paper towel dispenser protruding 9"

Recommendations: (Multiple Users – Near First Base Concession)

- 9.1.1 Remove side grab bar to max 12" from the rear wall at the close end and min 54" on the far end, and 33" to 36" above the finished floor in ambulatory
- 9.1.2 Adjust stall door to be self-closing and replace stall hardware with hardware operable without a tight pinch or grasp in ambulatory
- 9.1.3 Modify ambulatory stall to comply with the 2010 Standards Women's Restroom (Construction to be complete by 12/12/16)
- 9.1.4 Lower hook in ambulatory stall to max 43" above the finished floor

PROJECT NO.	DATE
REVISION	NO.
10/25/2016	
DRAWN BY: SNU	APPROVED BY: AMVS
625 West Avenue SW	DATE: 10/25/2016
Cedar Rapids, IA 52401	
PH: 319-378-1401	
CELL: 319-978-4755	
Amient DESIGN	
DOJ SURVEY - FOR REFERENCE ONLY	
CITY OF CEDAR RAPIDS VETERANS MEMORIAL STADIUM ADA COMPLIANCE	
CEDAR RAPIDS, IA	
SHEET NO.	
G1.6	
OF	
FILE NAME	
G0025 RC610	